

# BILL'S TOWING AND REPAIR LLC

[www.billstowing.biz](http://www.billstowing.biz)

Exit 92 I90/94 (Baraboo/Wis Dells)

S2516 US Hwy 12  
Baraboo, WI 53913  
(608) 356-2000

Exit 119 I90/94 (Lodi/Arlington)

W9179 Old Hwy 60  
Lodi, WI 53555  
(608) 592-7364

Sauk City Location

W13202 State Hwy 188  
Lodi, WI 53555  
(608) 592-7200

Dear Customer,

To help serve you better we are contacting you to update our vendor information. We have 2 locations just off Interstate 90/94 at Exit 119 (Lodi/Arlington) and Exit 92 (Baraboo/Wisconsin Dells) and 1 location in the Sauk City Area. We are here to assist you with all of your towing /breakdown needs 24 hours a day 7 days a week including Holidays.

Attached you will find an update Business information sheet which we need you to fill out and fax back to 608-592-4334. This information will help us update your company information as well. Please also see attached a list of services we provide and a list of equipment we have to help you with any service you may need in the future.

We would also like to make you aware of a Fleet Service Program we have available to help you maintain your trucks at a discounted price. If you are interested in this service please contact me at 608-592-7364.

For a better copy of this information please go to our website [www.billstowing.biz](http://www.billstowing.biz) and click on Vendor.

If there is anything else we can assist you with please feel free to give us a call!

Thank you for your time!

Angie Maynard

[interstatebillstowing@charter.net](mailto:interstatebillstowing@charter.net)

Bill's Towing and Repair LLC

608-592-7364



Exit 92 I90/94  
 (Baraboo/Wisconsin Dells)  
 S2516 US Hwy 12  
 Baraboo, WI 53913  
 (608) 356-2000

Exit 119 I90/94  
 (Lodi/Arlington)  
 W9179 Old Hwy 60  
 Lodi, WI 53555  
 (608) 592-7364

Sauk Location  
 W13202 State Hwy 188  
 Lodi, WI 53555  
 (608) 592-7200

## 2 locations off I90/94 Exit 92 and Exit 119



Heavy Duty  
 Specialists!



Level 3 Certified  
 Tow Operators

### Heavy Duty Towing Program

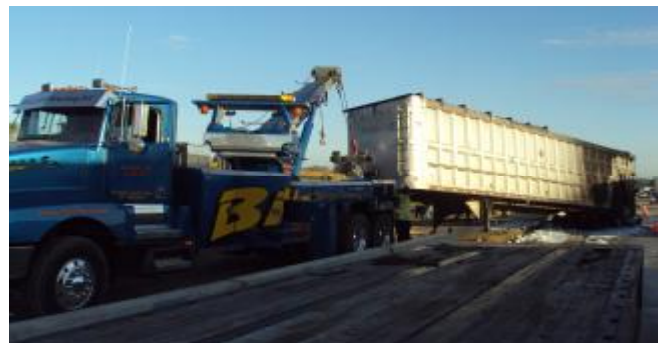
Let us be your preferred Towing Company

- Roadside Emergency Service
- Heavy Duty Road Side Diesel Technician
- Heavy Duty Towing
- Long Distance Towing
- Winchouts
- Rollover & Accident Recovery
- 24 Hour Service

- Heavy Truck and Trailer Repair
- US DOT Inspections
- PM Service
- Tire Sales and Service

ASK ABOUT OUR  
 FLEET SERVICE PROGRAMS

We are TRAA certified and hold a Master Heavy Duty towing and recovery, Air bag specialist certificate, which is 1 of only 4 in the State of Wisconsin and the only one within a 120 mile radius.



BIG OR SMALL WE HAUL THEM ALL



24 hour Towing, Recovery & Emergency Repairs

[www.billstowing.biz](http://www.billstowing.biz)

# BILL'S TOWING AND REPAIR LLC

[www.billstowing.biz](http://www.billstowing.biz)

Exit 92 I90/94 (Baraboo/Wis Dells)

S2516 US Hwy 12  
Baraboo, WI 53913  
(608) 356-2000

Exit 119 I90/94 (Lodi/Arlington)

W9179 Old Hwy 60  
Lodi, WI 53555  
(608) 592-7364

Sauk City Location

W13202 State Hwy 188  
Lodi, WI 53555  
(608) 592-7200

## Update Business Information Sheet

Please fill out information and fax back to 608-592-4334

Company Name:		
Address:		
City		Phone:
State:	Zip:	Fax:
Method of Payment: <input type="checkbox"/> visa/mc <input type="checkbox"/> Fleet Check <input type="checkbox"/> 30 day Charge		
Accounts Payable Contact:		
Name:		
Phone:		
Email:		
Fleet Manager Contact:		
Phone:		
Email:		
Breakdown Dept Contact:		
Phone:		
Email:		
Tax Exempt Number:		

# BILL'S TOWING AND REPAIR LLC

[www.billstowing.biz](http://www.billstowing.biz)

Exit 92 I90/94 (Baraboo/Wis Dells)

S2516 US Hwy 12  
Baraboo, WI 53913  
(608) 356-2000

Exit 119 I90/94 (Lodi/Arlington)

W9179 Old Hwy 60  
Lodi, WI 53555  
(608) 592-7364

Sauk City Location

W13202 State Hwy 188  
Lodi, WI 53555  
(608) 592-7200

## Equipment List

**1- ROTATOR WRECKER MOBILE CRANE RECOVERY UNIT**

1- 50 TON HEAVY DUTY SEMI WRECKER

1- 30 TON HEAVY DUTY SEMI WRECKER

3- SEMI TRACTORS

1- 53' SEMI TRAILER

1- 48' SEMI TRAILER

1- 35' SEMI TRAILER

2- SEMI LANDALL TRAILERS

2- FLATBED MEDIUM DUTY EXT. CAB W/ SIDE PULLER AND EXTRA WIDE 21' BED

1- FLATBED MEDIUM DUTY WITH SIDE PULLER AND 21' BED

1- INTERNATIONAL MEDIUM DUTY WRECKER

1- MITSUBISHI FLATBED W/ 19' BED

1- FORD F450 WRECKER, SELF LOADER 4X4

1- FORD 550 MEDIUM DUTY WRECKER 4X4

1- C3500 WRECKER

2- SKIDSTEER WITH ALL ATTACHEMENTS, SWEEPER, PALLET FORKS, BUCKETS, PLOWS, SNOWBLOWER

1- BACKHOE 4X4 WITH FORKS AND BUCKET

1- SERVICE TRUCK STAFFED WITH AIR COMPRESSOR, GENERATOR, WELDER, TORCH, TOOLS, TIRES, BRAKE CHAMERS, FILTERS, HOSES, FITTINGS, OIL, FUEL, CATCH BASINS, FLOOR DRY, AIR BAGS, ECT..

2- TANDEM AXLE TRAILER DOLLYS (FOR BROKEN SEMI TRAILERS)

1- SINGLE AXLE TRAILER DOLLY (FOR 5<sup>TH</sup> WHEEL PLATE)

1- FORD F550 DUMP TRUCK WITH V-PLOW AND SALTER

4- UTILITY TRAILERS 4X8, 5X9, 6X12 TANDEM

3- ENCLOSED STRAIGHT TRUCKS

1- CHEVROLET K1500 PLOW TRUCK WITH SALTER

1- CHEVROLET K2500 EXTRA CAB

1- SUPPLIES: SHRINK WRAP, PALLETS, MESSAGE SIGN BOARD, CONES

1- 4X4 TRACTOR

1- SHUTTLE FOR UP TO 8 PEOPLE

- EXTENSIVE ROOM FOR INCIDENT COMMAND POST, DEBRIFFING, INVESTIGATIONS, EQUIPMENT DROP OFF POINT, EASY ACCESS RAMP, ECT